



**CONCRETE PROTECTION & REPAIR PRODUCTS, INC.**

**CARBON FIBER INSTALLATION MANUAL**



**\*READ THIS MANUAL CAREFULLY BEFORE PROCEEDING\***

**\*READ PRODUCT TECHNICAL DATA SHEETS (TDS) AND SAFETY DATA SHEETS (SDS)\***

**\*WEAR SAFETY GLASSES AND LATEX GLOVES\***

**\*KEEP WORK AREA WELL VENTILATED \***

**\*WEAR LONG SLEEVES AND LONG PANTS\***

WHEN IN DOUBT PLEASE CONSULT A PROFESSIONAL STRUCTURAL ENGINEER

**It is recommended that the product be tested to determine if suitable for a specific application. Responsibility remains with the contractor and owner for the design, application and proper installation of each product.**

*See our video of Carbon Weld installation at  
[www.cpr-products.com/weldvideo.html](http://www.cpr-products.com/weldvideo.html)*

# **TABLE OF CONTENTS**

Safety Information and Procedures ..... page 2

Project Checklist ..... page 3

Preparation ..... page 4 - 5

Installation ..... page 6 - 7

Cleanup and Aftercare ..... page 8

## **SAFETY INFORMATION & PROCEDURES**

**\*PRODUCTS ARE TIME AND TEMPERATURE SENSITIVE – CALL US FOR FURTHER INFORMATION \***

**READ TDS AND SDS PRIOR TO BEGINNING WORK**

**ALWAYS WEAR SAFETY GLASSES, LATEX GLOVES, LONG SLEEVES, AND LONG PANTS WHILE HANDLING THESE MATERIALS**

Make sure material is stored at room temperature

Material is hazardous and corrosive – prevent it from contacting your skin, eyes or mouth

Avoid inhaling fumes from this material – ventilate work area

If material is spilled, absorb and place in closed container – do not allow material to enter waterways

If material touches skin, wash immediately with soap and water

If material touches eyes, flush with water and seek medical attention

If material is swallowed seek medical attention

**FOR INFORMATION, TDS, AND SDS  
VISIT US AT:**

**[www.cpr-products.com](http://www.cpr-products.com)**

**OR CALL US AT (636) 717-0666**

**EMAIL: [info@cpr-products.com](mailto:info@cpr-products.com)**

# PROJECT CHECKLIST

(ONLY SOME ITEMS INCLUDED WITH KIT)

\* latex gloves

\* safety glasses

\* respirator

\* scissors

\* drop cloth



\* diamond-wheel grinder with vacuum attachment

\* pencil/marker

\* putty knife & trowel

\* paint roller

\* paint roller pan

\* tape measure/ruler

\* prop mixer & drill

\* packet of carbon weld fabric

\* 30 oz. 2-piece unit of #500 Bonding Epoxy



## WALL PREPARATION

- Use a diamond-wheel grinder to remove all paint, and loose or foreign material at a width of 7" on either side of crack.
- ***YOU MUST OBTAIN FULL EXPOSURE TO BARE, POUROUS CONCRETE!*** Otherwise, this product *will not work*.
- Grinding creates a large amount of dust – best to use a grinder with a vacuum attachment. Otherwise wear a ventilator, open doors/windows, and expect time-consuming clean-up.
- Fill the crack with a concrete patching material (non-shrink grout). Scrape excess flush with wall and allow to cure.



## FURTHER PREPARATION

- Examine the crack for changes in direction. Remember that the toes (black strands) in the fabric must be perpendicular to the crack at all points. Mark the wall along the crack to guide your fabric placement.



- If necessary, cut sections of fabric as appropriate, so you can follow the crack with perpendicular fabric placement.



- Lastly, stage all materials (pieces of fabric, pan, roller) within reach near wall. Lay a drop cloth or trash bag at base of crack to keep floor clean.

## INSTALLATION



- #500 Bonding Epoxy is mixed by emptying the small container (B material) into the large container (A material)
- For smaller amounts use a third container
- Mix thoroughly - best done with a prop mixer
- Epoxy will ***start curing in 20 minutes*** – so only mix what you can use before that (never more than 30 oz. total)



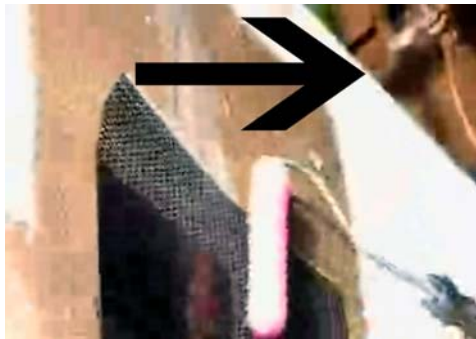
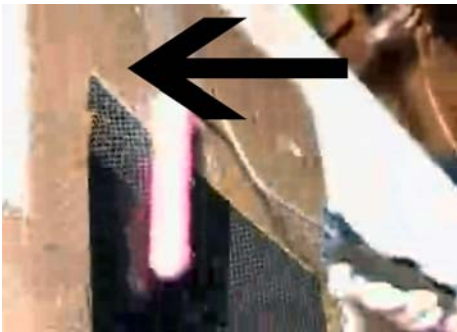
- Pour the mixed epoxy into paint roller pan
- Apply thick primer coat of epoxy onto prepped area using the provided roller

## INSTALLATION

- Lift fabric and carefully press it into place
- Use gloved hands to lightly smooth out air bubbles from the middle of the fabric outward



- Roll on a second coat of resin, pushing out air pockets by rolling from center to left then center to right
- Saturate the fabric with resin, ensuring that it is fully encapsulated



- Best results occur when fabric sheets are slightly overlapped
  - Allow 24-48 hours for resin to fully cure



## **CLEANUP & AFTERCARE**

- Any unused material must be mixed together and allowed to cure and cool before disposal.
- After mixed material is allowed to harden and cool it may be deposited in a landfill – assure accordance with local, state and federal regulation.
- Wash skin thoroughly with soap and water before eating or smoking. Wash or discard contaminated clothing.
- After a minimum 48 hours epoxy is fully cured
- Before painting over repair, roughen surface with sand paper to allow better paint adhesion.