

CONCRETE PROTECTION & REPAIR PRODUCTS, INC.

CRACK INJECTION MANUAL



TECH KIT EPOXY & COMPLETE KIT

*This kit is designed to repair 10 lineal feet.
Cracks wider than 1/8" require extra material (sold separately.)*

READ THIS MANUAL CAREFULLY BEFORE PROCEEDING

READ ALL PRODUCT TECHNICAL DATA SHEETS AND MATERIAL SAFETY DATA SHEETS (MSDS)

WEAR SAFETY GLASSES AND LATEX GLOVES

***KEEP WORK AREA WELL VENTILATED ***

WEAR LONG SLEEVES AND LONG PANTS

WHEN IN DOUBT PLEASE CONSULT A PROFESSIONAL STRUCTURAL ENGINEER

It is recommended that the product be tested to determine if suitable for a specific application. Responsibility remains with the contractor and owner for the design, application and proper installation of each product.

TABLE OF CONTENTS

Safety Information and Procedures	page 2
Project Checklist	page 3
Crack / Wall Preparation	page 4 - 5
Setting Injection Ports	page 6 - 8
Surface Seal Application	page 9
Using the Cartridges	page 10 -11
Injecting the Crack	page 12-13
Cleanup and Aftercare	page 14

SAFETY INFORMATION & PROCEDURES

**READ PRODUCT DATA SHEET AND MSDS
PRIOR TO BEGINNING WORK**

**ALWAYS WEAR SAFETY GLASSES, LATEX GLOVES,
LONG SLEEVES, AND LONG PANTS WHILE HANDLING THESE MATERIALS**

Make sure material is stored at room temperature

Material is hazardous and corrosive – prevent it from contacting your skin, eyes or mouth

Avoid inhaling fumes from this material – ventilate work area

If material is spilled, absorb and place in closed container – do not allow
material to enter waterways

If material touches skin, wash immediately with soap and water

If material touches eyes, flush with water and seek medical attention

If material is swallowed seek medical attention

FOR INFORMATION AND MSDS AND DATA SHEETS

VISIT US AT:

www.cpr-products.com

OR CALL US AT (636) 717-0666

TOLL FREE: 800-531-8940

PROJECT CHECKLIST

(MATERIALS NOT IN COMPLETE KIT ARE SOLD SEPERATELY)

*2 pair latex gloves

*safety glasses

*drop cloth / trash bag

*wire brush

*pencil

*2 putty knives / trowels



*single component gun

*nozzles and dasher rods

*modeling clay

*bag of 20 injection ports

*cardboard for mixing

*surface seal material

*Surface Slick (optional)

*injection epoxy material



OR



OR



CRACK/WALL PREPARATION

First, check the foundation outside at the site of the crack.

If the crack is visible above the soil-line, it must be sealed (using steps below).

Use a grinder or wire brush to clean concrete wall.

Remove all paint, and loose or foreign material at least 2" on each side of crack (best to use vacuum hose also).



OR



CRACK/WALL PREPARATION

From the floor up, place a mark next to the crack every 6 vertical inches for port locations.

Place a drop-cloth/plastic trash bag beneath the crack on the floor against the wall.



SETTING INJECTION PORTS

At a 1:1 ratio, pump or scoop small amount of #602 surface seal paste onto cardboard mixing surface



OR



OR

Remove strap and plug of each port.



SETTING INJECTION PORTS

Use trowel/putty knife to thoroughly mix #602 into an even, grey consistency.

ONCE MIXED, MOVE FAST: #602 WILL GET TACKY AND UNWORKABLE IN 5 TO 7 MINUTES.



Roll the base of the port in mixed #602 along the edge – make sure not to plug hole in center of base.

SETTING INJECTION PORTS



Stick each port to the wall over center of crack at each of the marks you made.



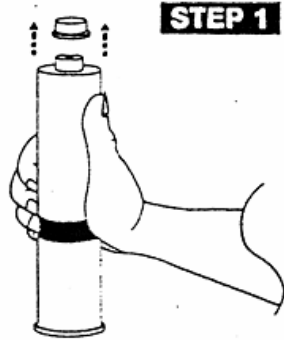
SURFACE SEAL APPLICATION



- Mix additional batches of #602.
- Use trowel/putty knife to apply #602 on wall over crack.
- Firmly seal crack and base of each port.
- #602 should be 1/8" thick, and 3" wide, centered over crack.
- Leave top 1/8" of crack unsealed.
- Spray Surface Slick (optional finishing agent) on to #602 on wall before it hardens
- Rub with gloved hand to smooth appearance.
- Allow #602 to cure until it cannot be marked by your thumbnail (30-40 minutes).



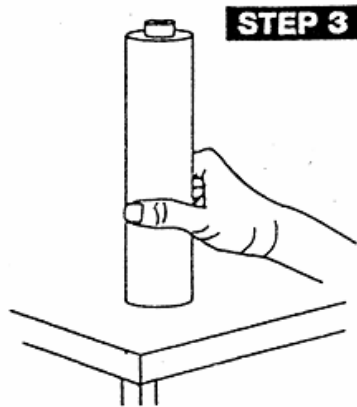
USING THE CARTRIDGES



Remove Red Snap Lock Plug from top of cartridge.



Remove tape band from the cartridge kit and discard.



Place cartridge on firm surface.

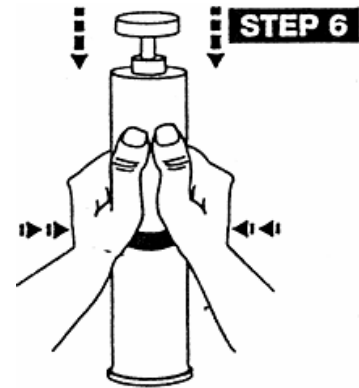


Insert plunger rod through opening and fasten rod to wheel by turning clockwise approximately three (3) turns.

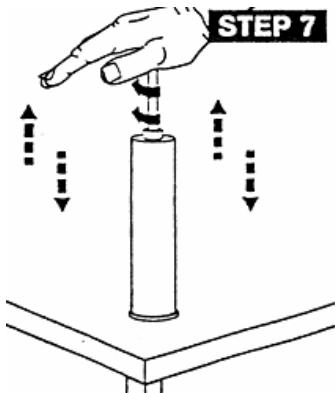
USING THE CARTRIDGES



Pull rod straight up towards open end of cartridge. This will separate the foil from the mixing wheel.



Depress the cartridge in the area of the removed tape band to deform the foil barrier. Push rod to end of cartridge to get foil barrier out of the way.



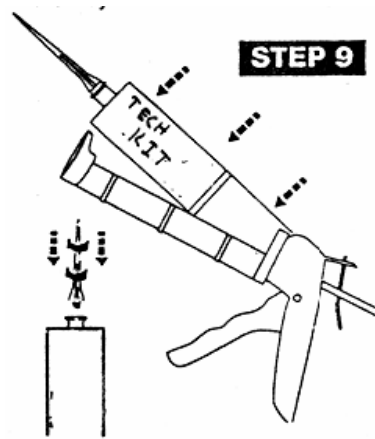
Rotate the rod in a clockwise direction while moving it up and down in the cartridge. Be sure to move the rod all the way to the top and bottom of the cartridge while mixing. Mix materials for approximately 20 strokes or 1 minute. The rod should be fully extended on the last stroke.



Remove bottom cap from the cartridge and unscrew the rod from the wheel in a counter-clockwise direction. Remove the rod from the cartridge and discard.

**** EPOXY IS NOW MIXED AND WILL HARDEN IN 30 MINUTES ****

INJECTING THE CRACK



Screw the threaded nozzle into the cartridge and place cartridge in caulk gun. Dispense liquid epoxy within 30 minutes after mixing. This product will harden if not dispensed within 30 minutes.



- Insert nozzle into the bottom port.
- ***IMPORTANT:*** Do not jiggle the port – this will break the brittle #602 and cause the port to snap off.
- ***IMPORTANT:*** The crack will fill at the same rate no matter how hard you pump – too much pressure causes ports to blow off or material to flow out the back of the cartridge.
- Using only 2 fingers, pump trigger slow and steady until material appears at the next port up.
- Press gun's thumb lever to release pressure before removing nozzle from port.
- Plug bottom port and move to the next port above.

INJECTING THE CRACK



- Continue from port to port until material is visible at the top of the crack/wall.
- From the bottom up, inspect each port: make sure epoxy material is visible.
- If not, remove plug from that port and the one above. Inject until epoxy is seen at the port above.
- Any leaks should be wiped clean and plugged with clay.
- Repeat inspection – top off again in 15 minutes until all ports appear full.

CLEANUP & AFTERCARE

- Any unused material must be mixed together and allowed to cure and cool before disposal.
- Material may be deposited in a landfill in accordance with local, state and federal regulation.
- Wash skin thoroughly with soap and water before eating or smoking. Wash or discard contaminated clothing.
- After a minimum 48 hours, protruding injection ports may be cut or sawed flush with wall.
- Before painting over repair, roughen surface sealer with sand paper to allow better paint adhesion.